

## The Westmore

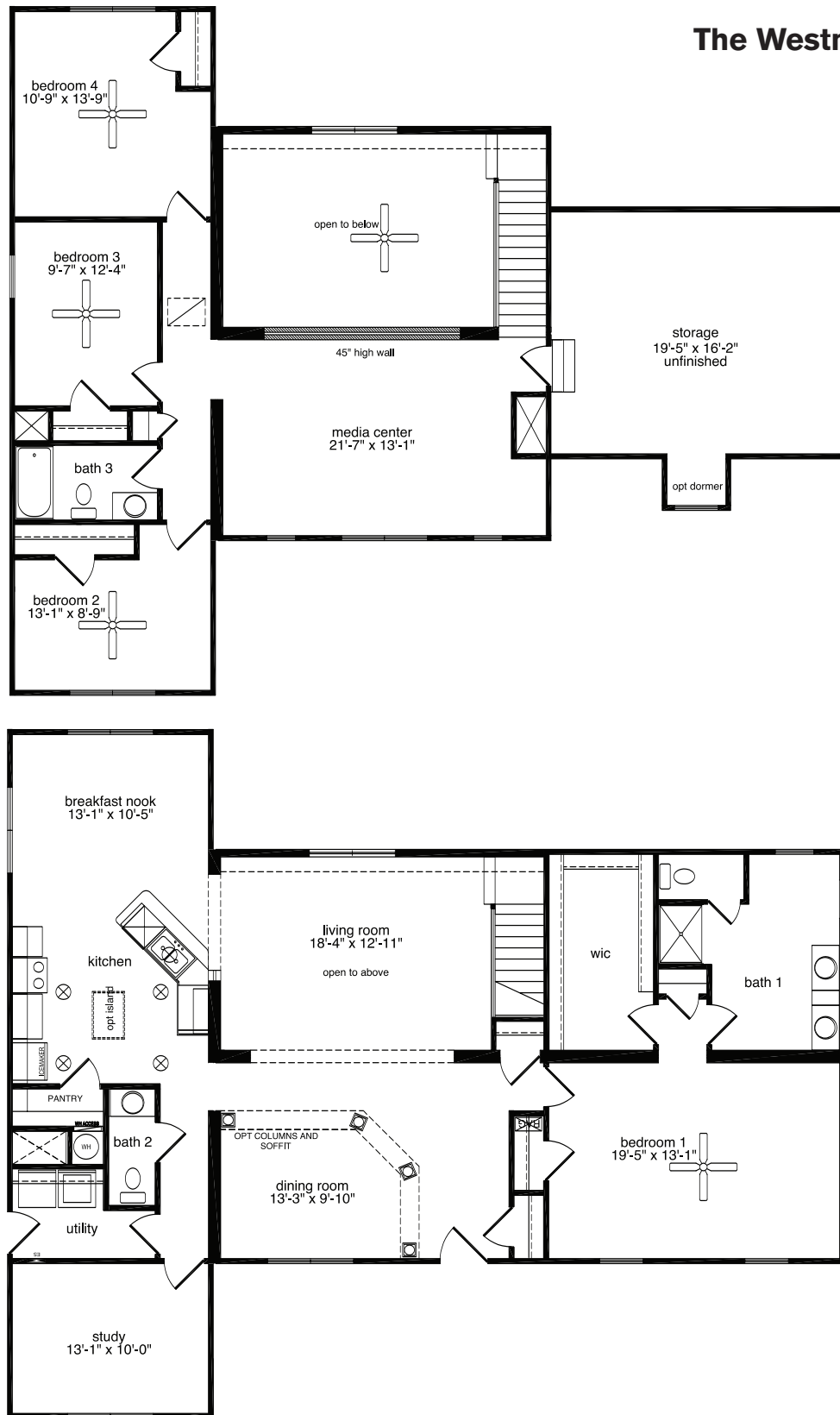


The Westmore provides the convenience of a first floor master suite complete with an enormous walk-in closet. A secluded study and an 'open to above' living room are also first floor highlights. The home's second floor features a media center, a bath and three bedrooms.

### **The Westmore**

4 Bedrooms, 2.5 Baths  
1,800 1st Floor, 940 2nd Floor, 2,740 Living Area  
46' x 55'11" Dimensions

# The Westmore



All home elevations are artist renderings and may vary from actual construction. All floor plans and room sizes are approximate. All information contained is the sole property of HandCrafted Homes



**HandCrafted Homes**  
A BETTER WAY TO BUILD

**The Westmore**  
4 Bedrooms, 2.5 Baths  
1,800 1st Floor, 940 2nd Floor, 2,740 Living Area  
46' x 55'11" Dimensions

**877.424.4321**



436.0001  
430.6662 fax

101 Eastern Minerals Rd Henderson, NC 27537

[www.HandCraftedHomes.com](http://www.HandCraftedHomes.com)