

## The Salisbury

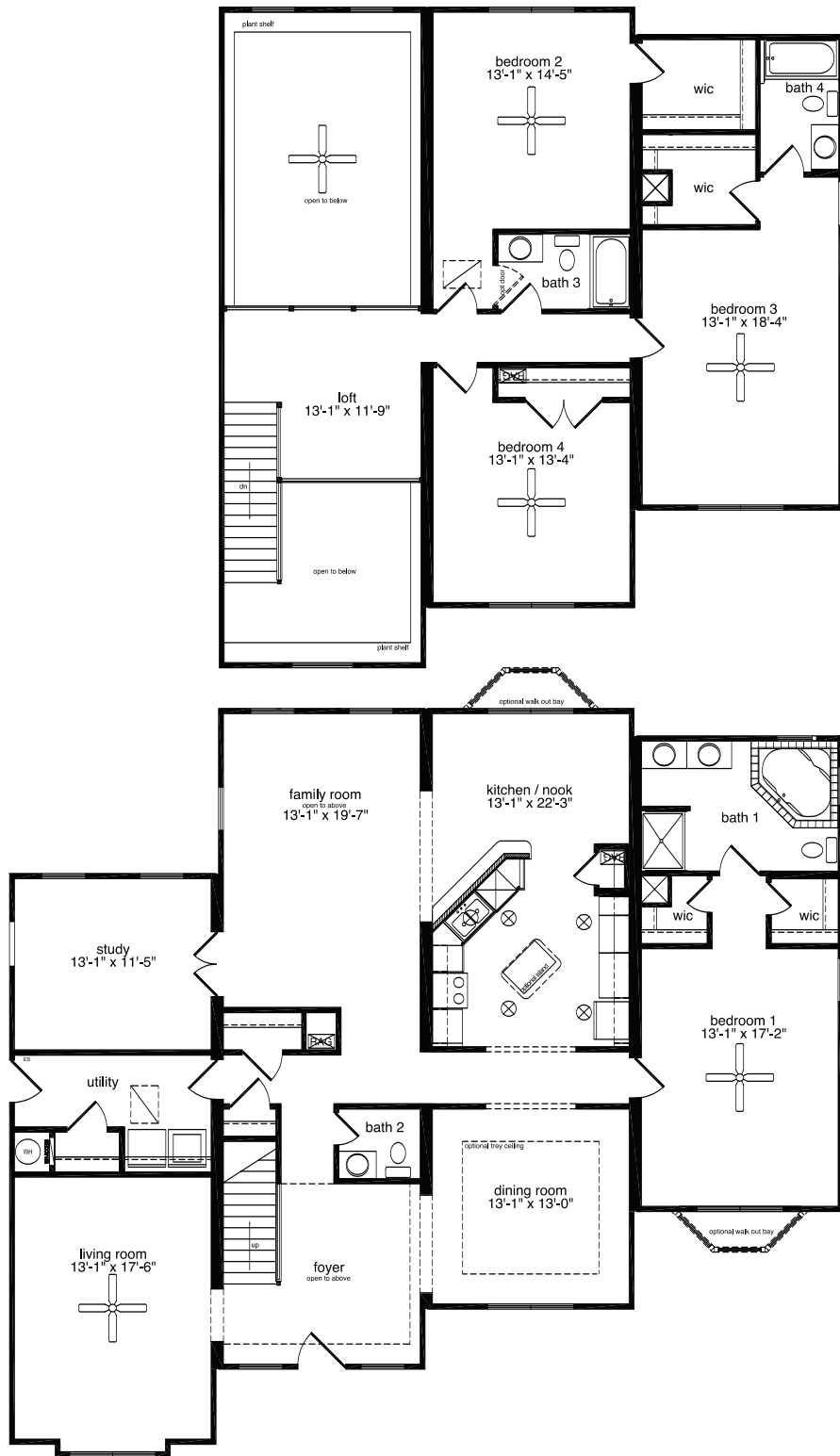


The magnificence of this home can be appreciated immediately upon entering the two-story foyer. The first floor is highlighted by the dining room with optional tray ceiling, study, family room, living room and kitchen/nook combo. The master suite offers his and her walk-in closets and an optional walk-out bay window. Three additional bedrooms and two additional baths are located on the second level.

### **The Salisbury**

4 Bedrooms, 3.5 Baths  
2,070 1st Floor, 1,104 2nd Floor, 3,174 Living Area  
49'10" x 55'9" Dimensions

# The Salisbury



All home elevations are artist renderings and may vary from actual construction. All floor plans and room sizes are approximate. All information contained is the sole property of HandCrafted Homes



**HandCrafted Homes**  
A BETTER WAY TO BUILD

**The Salisbury**  
4 Bedrooms, 3.5 Baths  
2,070 1st Floor, 1,104 2nd Floor, 3,174 Living Area  
49'10" x 55'9" Dimensions

**877.424.4321**



436.0001  
430.6662 fax

101 Eastern Minerals Rd Henderson, NC 27537

[www.HandCraftedHomes.com](http://www.HandCraftedHomes.com)