

The Mayfield

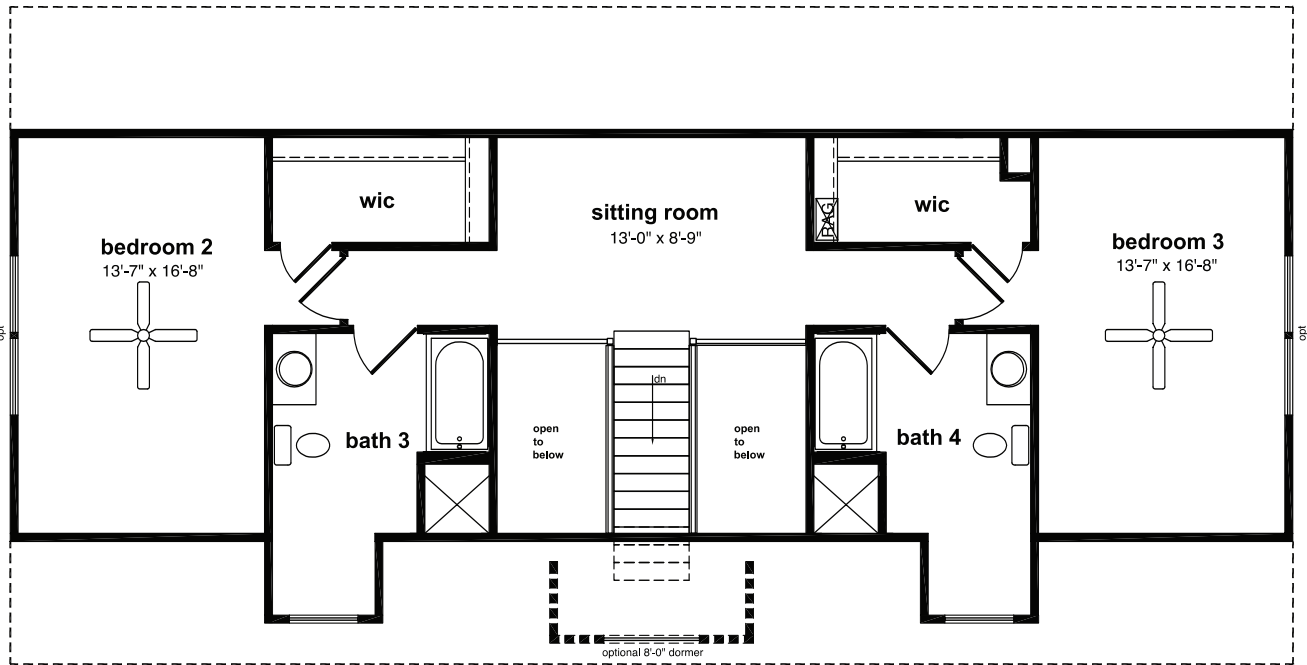


This is a magnificent Cape design with an open foyer, large living room and spacious kitchen with island. The formal dining room and master suite complete the first floor. Two bedrooms, a sitting room and two full baths highlight the suggested second floor.

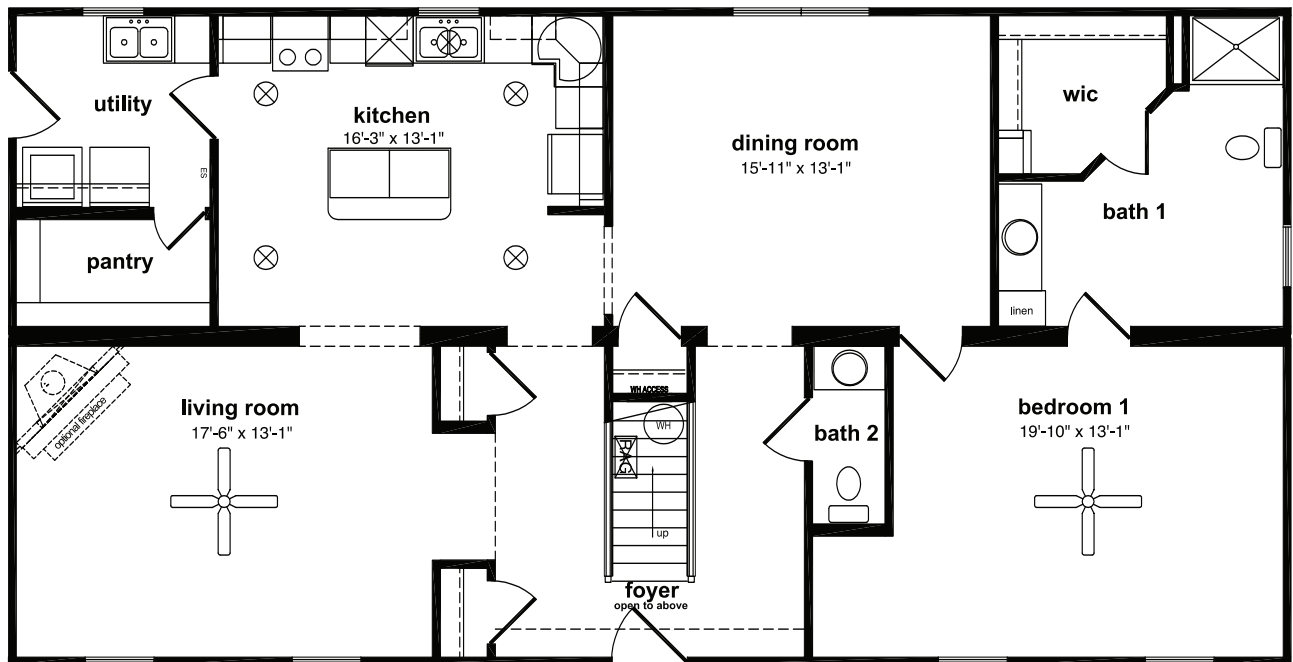
The Mayfield

3 Bedrooms, 3.5 Baths
1,494 1st Floor, 864 2nd Floor, 2,358 Living Area
27'8" x 54' Dimensions

The Mayfield



FOR SECOND FLOOR LIVING AREA ALL DESIGN, MATERIALS, AND WORK TO BE THE RESPONSIBILITY OF THE BUILDER ON SITE, INSULATION MUST REMAIN R-30 IN THE ROOF AND R-13 IN THE WALLS. LIGHT, VENT & EGRESS IS THE RESPONSIBILITY OF THE BUILDER ON SITE.



All home elevations are artist renderings and may vary from actual construction. All floor plans and room sizes are approximate. All information contained is the sole property of HandCrafted Homes



HandCrafted Homes
A BETTER WAY TO BUILD

The Mayfield

3 Bedrooms, 3.5 Baths
1,494 1st Floor, 864 2nd Floor, 2,358 Living Area
27'8" x 54' Dimensions

877.424.4321



436.0001
430.6662 fax

101 Eastern Minerals Rd Henderson, NC 27537

www.HandCraftedHomes.com