

The Creedmore

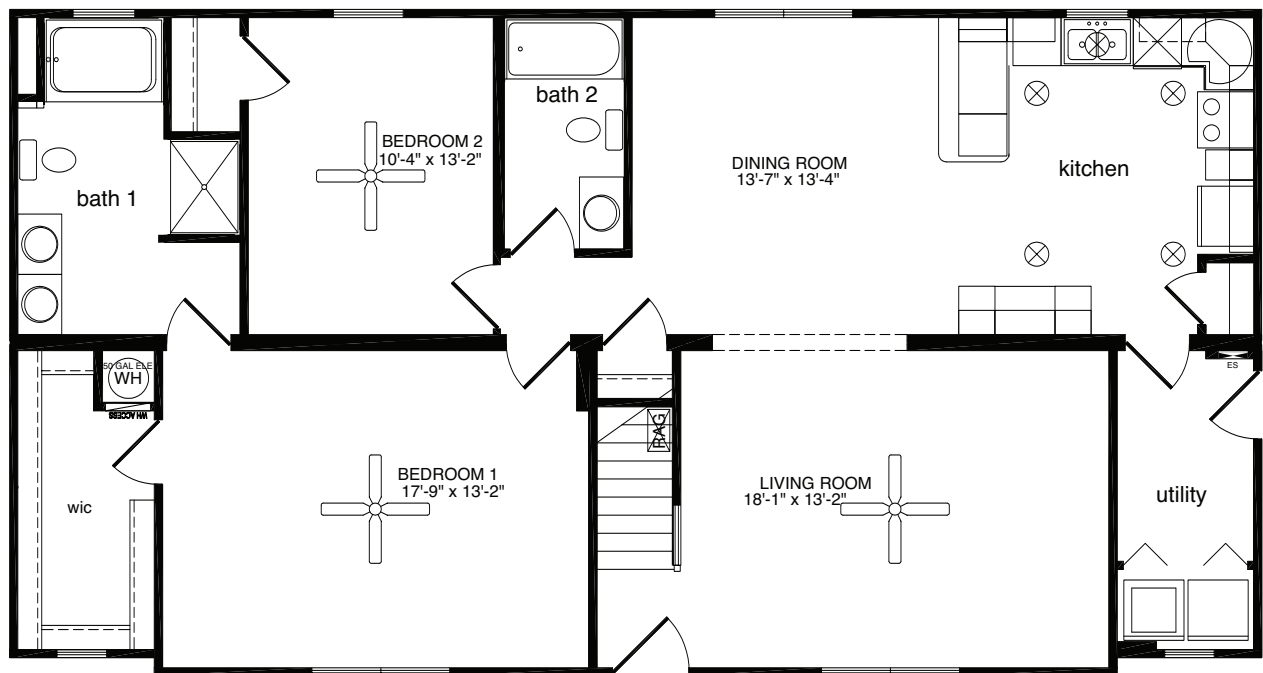
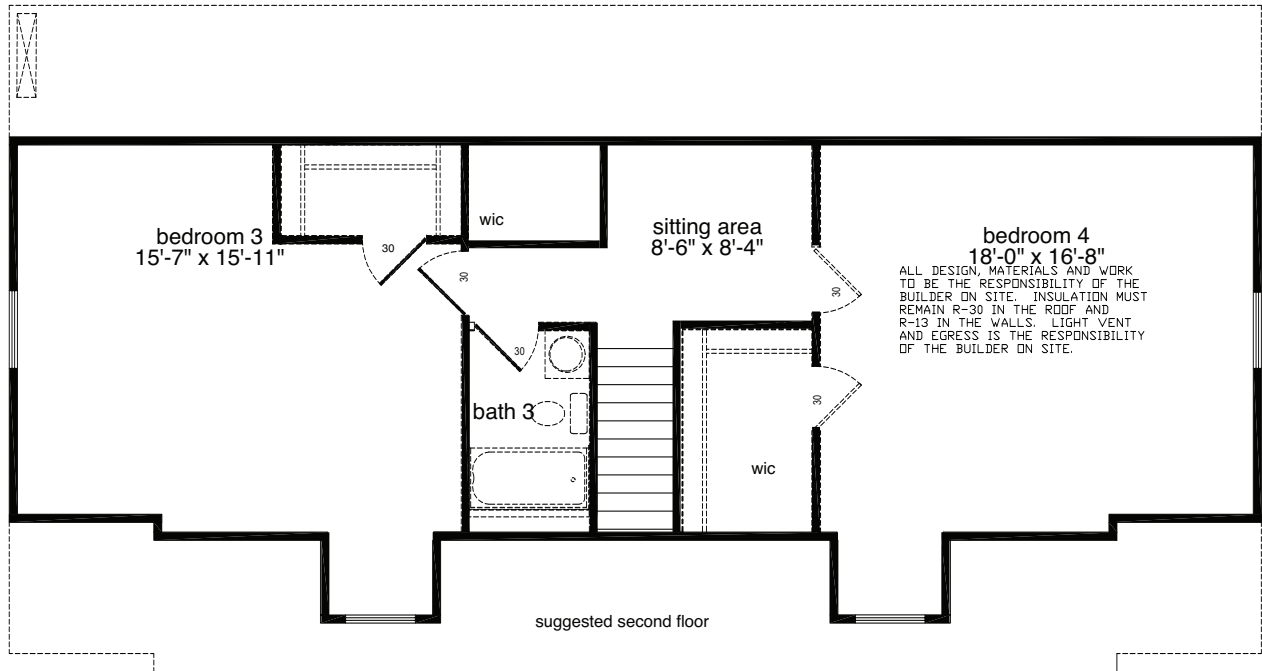


A thing of beauty – that's The Creedmore. Its optional three-dormer design and stunning front porch, built on-site, give this home exceptional curb appeal. The first floor features two bedrooms, 2 baths, living room, dining room and kitchen. The suggested second floor provides the home's third bath and two additional bedrooms.

The Creedmore

4 Bedrooms, 3 Baths
1,438 1st Floor, 832 2nd Floor, 2,270 Living Area
27'8" x 52' Dimensions

The Creedmore



All home elevations are artist renderings and may vary from actual construction. All floor plans and room sizes are approximate. All information contained is the sole property of HandCrafted Homes



HandCrafted Homes
A BETTER WAY TO BUILD

The Creedmore

4 Bedrooms, 3 Baths
1,438 1st Floor, 832 2nd Floor, 2,270 Living Area
27'8" x 52' Dimensions

877.424.4321



436.0001
430.6662 fax

101 Eastern Minerals Rd Henderson, NC 27537

www.HandCraftedHomes.com