

## The Chesterfield

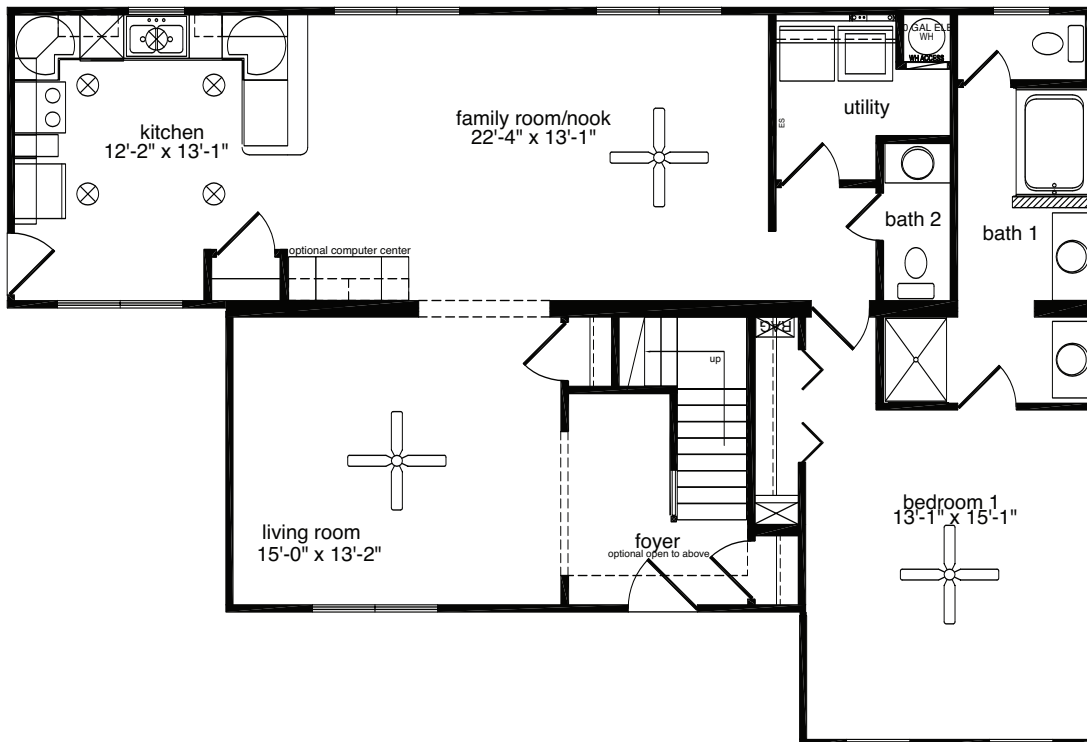
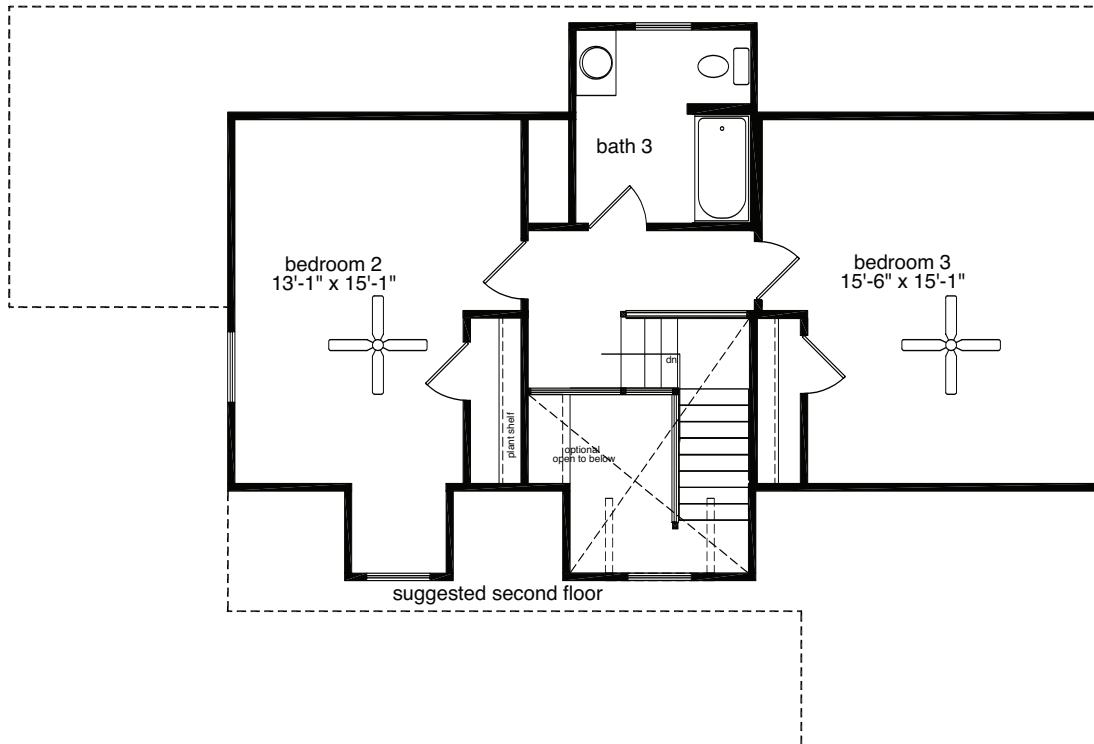


The Chesterfield provides a large family room/nook combination just off the kitchen. The living room is conveniently located just off the foyer, which is open to above. The master suite completes the first floor design and offers a private setting complete with his and her vanities. The suggested second floor has two additional bedrooms and a full bath.

### **The Chesterfield**

3 Bedrooms, 2.5 Baths  
1,328 1st Floor, 690 2nd Floor, 2,018 Living Area  
33'10" x 50' Dimensions

The Chesterfield



All home elevations are artist renderings and may vary from actual construction. All floor plans and room sizes are approximate. All information contained is the sole property of HandCrafted Homes



**HandCrafted Homes**  
A BETTER WAY TO BUILD

**The Chesterfield**  
3 Bedrooms, 2.5 Baths  
1,328 1st Floor, 690 2nd Floor, 2,018 Living Area  
33'10" x 50' Dimensions

**877.424.4321**



436.0001  
430.6662 fax

101 Eastern Minerals Rd Henderson, NC 27537

[www.HandCraftedHomes.com](http://www.HandCraftedHomes.com)