

The Bluffton

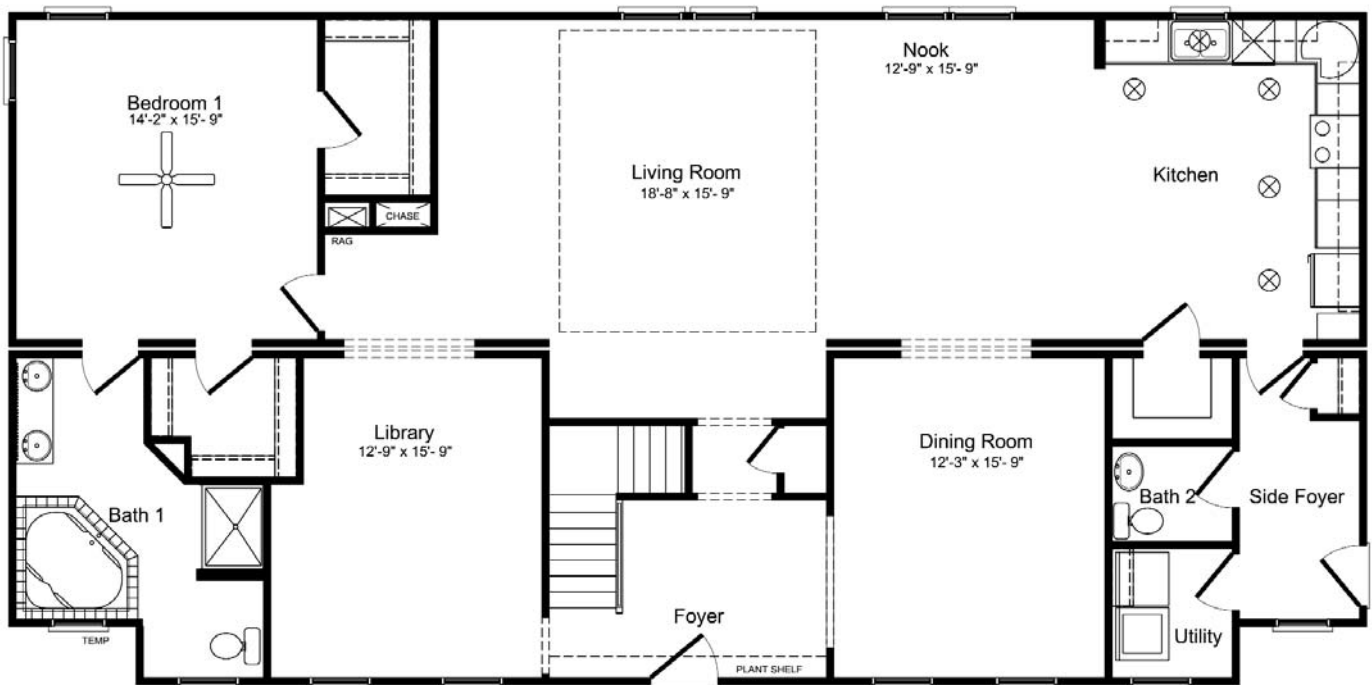
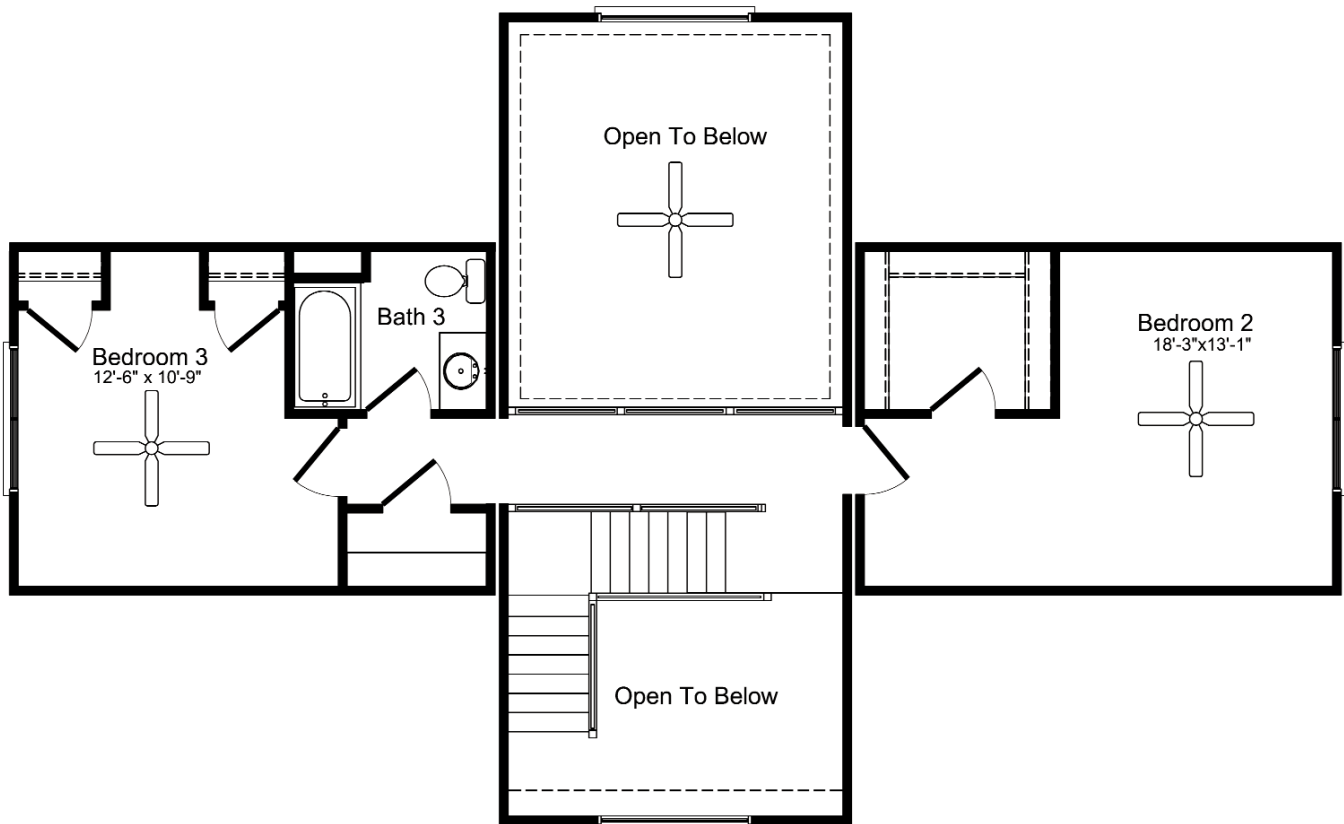


As you drive by the exterior of the Bluffton, visions of live oaks laden with Spanish moss come to mind. Inspired by the low country areas of the South, this plan offers spacious living in grandiose style. The open foyer and living room with the stair balcony overlooking both areas are reminiscent of true southern style. The master bedroom, living room, breakfast nook and kitchen areas are situated at the rear of the home with lots of glass to capture those open water views, whether they be in the marsh or overlooking the lake.

The Bluffton

3 Bedrooms, 2.5 Baths
1,994 1st Floor, 663 2nd Floor, 2,657 Living Area
32' x 64' Dimensions

The Bluffton



All home elevations are artist renderings and may vary from actual construction. All floor plans and room sizes are approximate. All information contained is the sole property of HandCrafted Homes



HandCrafted Homes
A BETTER WAY TO BUILD

The Bluffton

3 Bedrooms, 2.5 Baths
1,994 1st Floor, 663 2nd Floor, 2,657 Living Area
32' x 64' Dimensions

877.424.4321

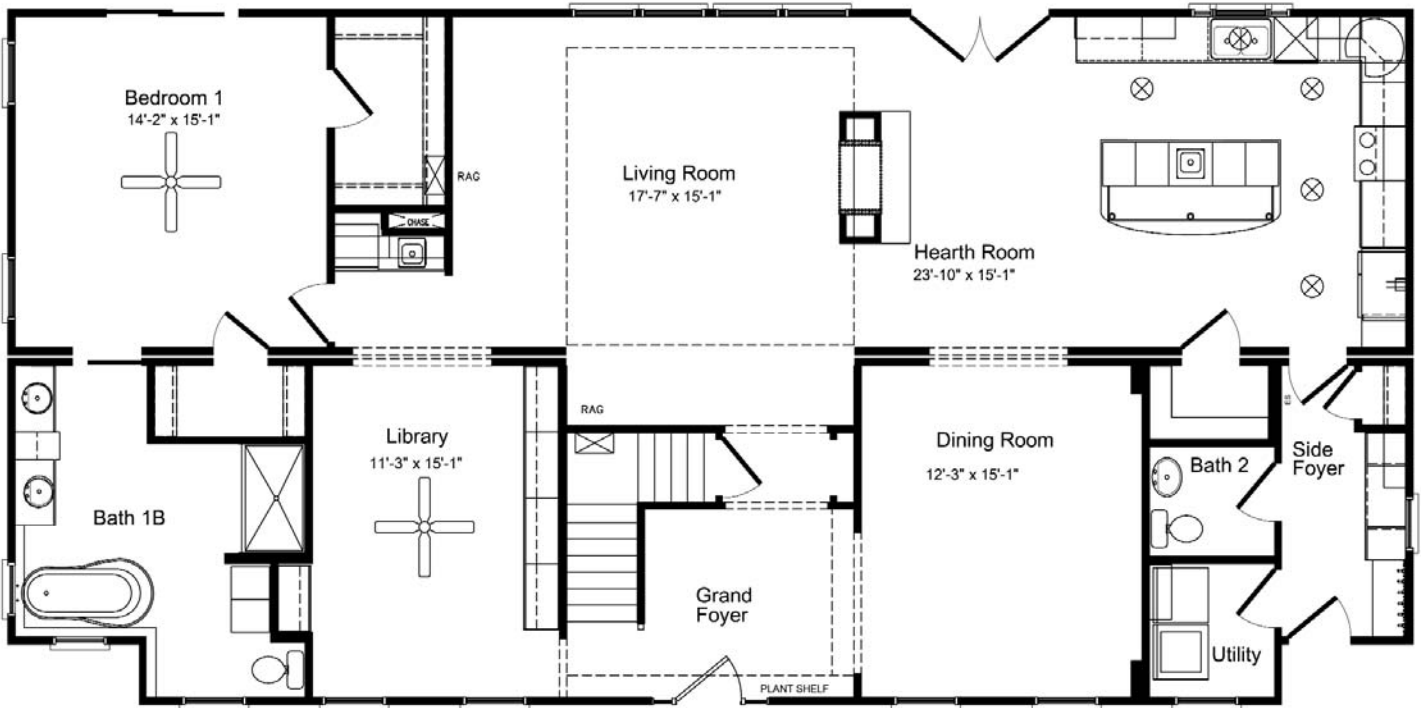
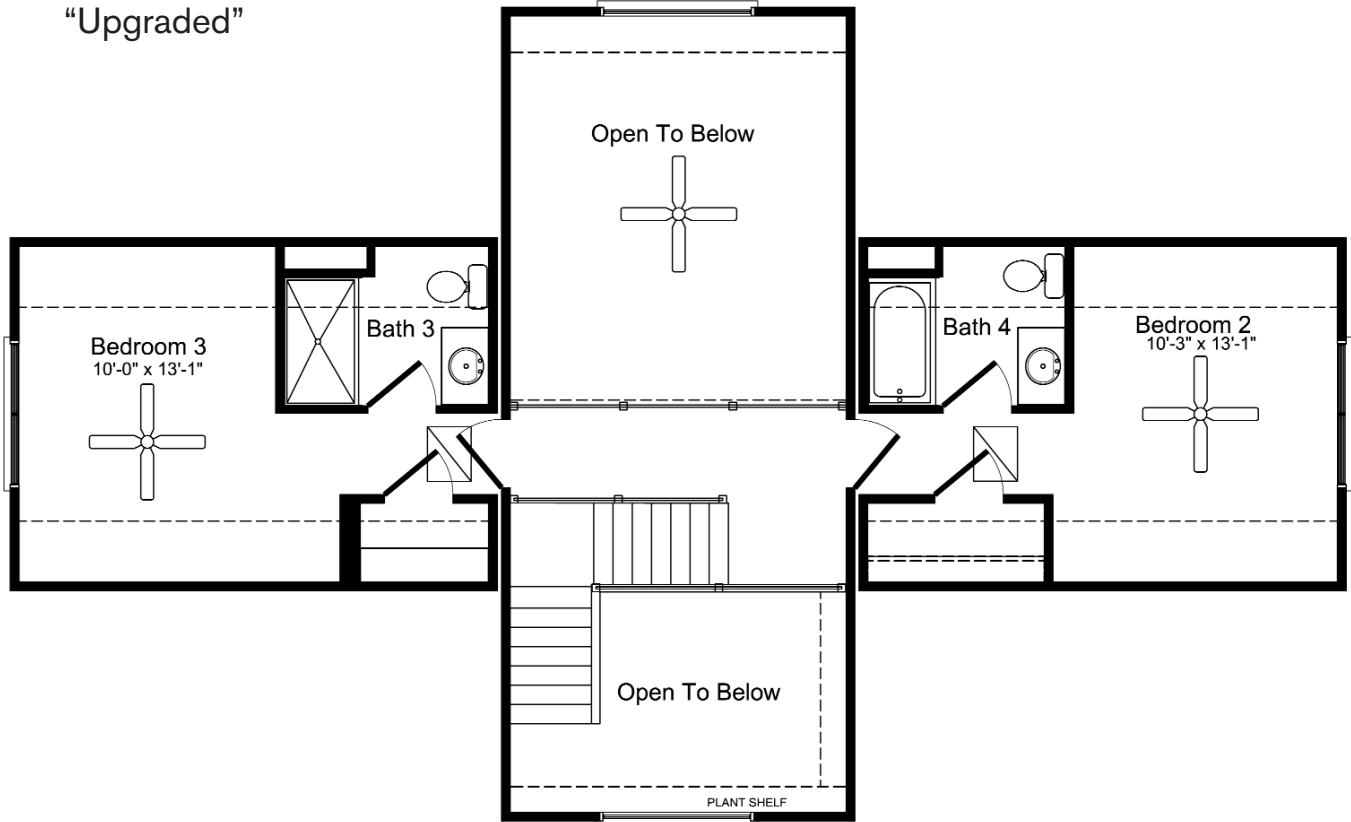


436.0001
430.6662 fax

101 Eastern Minerals Rd Henderson, NC 27537

www.HandCraftedHomes.com

The Bluffton
"Upgraded"



All home elevations are artist renderings and may vary from actual construction. All floor plans and room sizes are approximate. All information contained is the sole property of HandCrafted Homes



HandCrafted Homes
A BETTER WAY TO BUILD

The Bluffton
3 Bedrooms, 3.5 Baths
1,994 1st Floor, 663 2nd Floor, 2,657 Living Area
32' x 64' Dimensions

877.424.4321



436.0001
430.6662 fax

101 Eastern Minerals Rd Henderson, NC 27537

www.HandCraftedHomes.com