

## The Apex

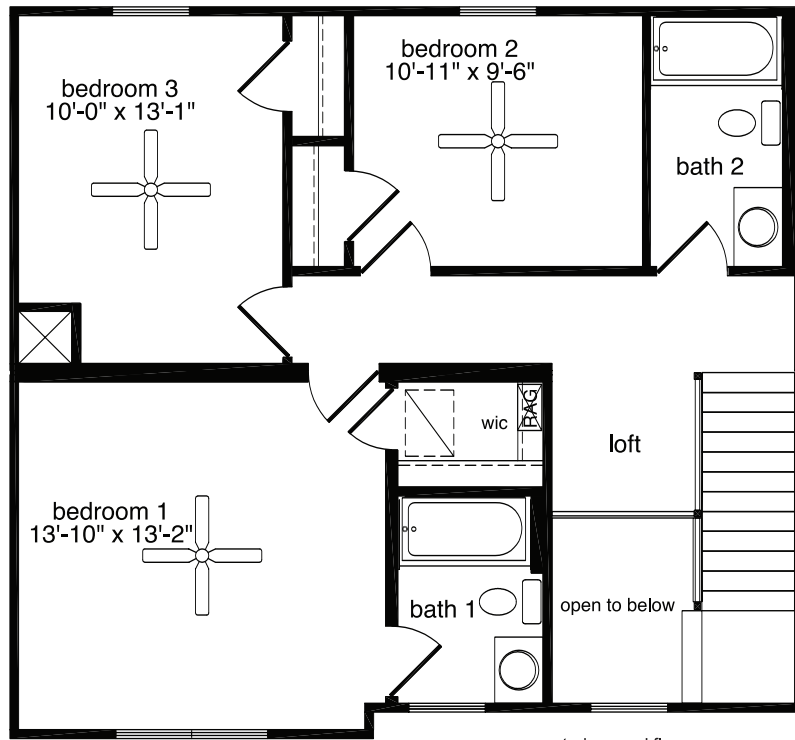


The wide-open kitchen and connecting dining room highlight the first floor of The Apex. The large living room and half bath complete the first floor. The second floor offers three bedrooms, two baths and an abundance of closet space.

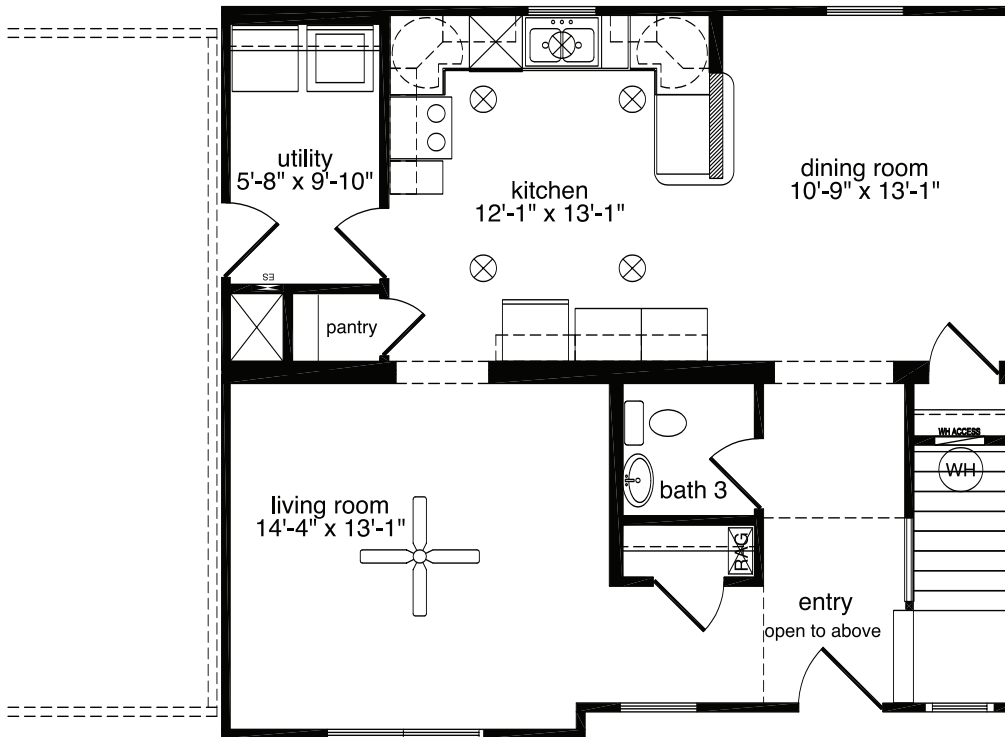
### **The Apex**

3 Bedrooms, 2.5 Baths  
813 1st Floor, 728 2nd Floor, 1,541 Living Area  
27'8" x 30' Dimensions

# The Apex



suggested second floor



All home elevations are artist renderings and may vary from actual construction. All floor plans and room sizes are approximate. All information contained is the sole property of HandCrafted Homes



**HandCrafted Homes**  
A BETTER WAY TO BUILD

## The Apex

3 Bedrooms, 2.5 Baths  
813 1st Floor, 728 2nd Floor, 1,541 Living Area  
27'8" x 30' Dimensions

**877.424.4321**



436.0001  
430.6662 fax

101 Eastern Minerals Rd Henderson, NC 27537

[www.HandCraftedHomes.com](http://www.HandCraftedHomes.com)