

## The Walnut



This home's additional depth provides rooms of greater size with plenty of space to move. An enormous master suite is complete with sitting area, walk-in closet and bath. Two additional bedrooms, a full bath, study, combined dining/great room and kitchen with breakfast nook round out the remainder of the floor plan.

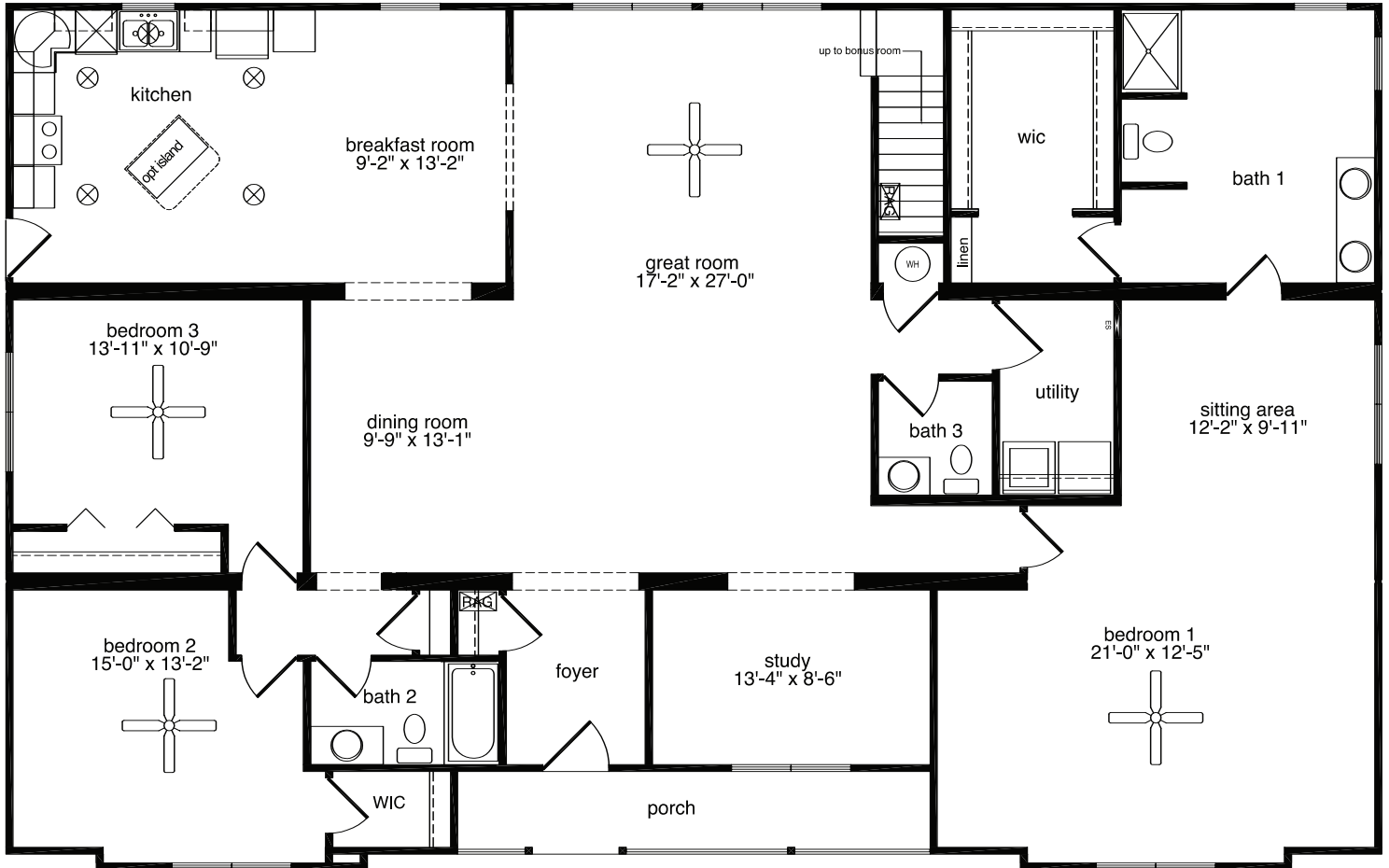
### **The Walnut**

3 Bedrooms, 2.5 Baths

2,625 Living Area

41'7" x 66' Dimensions

**The Walnut**



All home elevations are artist renderings and may vary from actual construction. All floor plans and room sizes are approximate. All information contained is the sole property of HandCrafted Homes



**HandCrafted Homes**  
A BETTER WAY TO BUILD

**The Walnut**  
3 Bedrooms, 2.5 Baths  
2,625 Living Area  
41'7" x 66' Dimensions

**877.424.4321**



436.0001  
430.6662 fax

101 Eastern Minerals Rd Henderson, NC 27537

[www.HandCraftedHomes.com](http://www.HandCraftedHomes.com)