

The Poplar

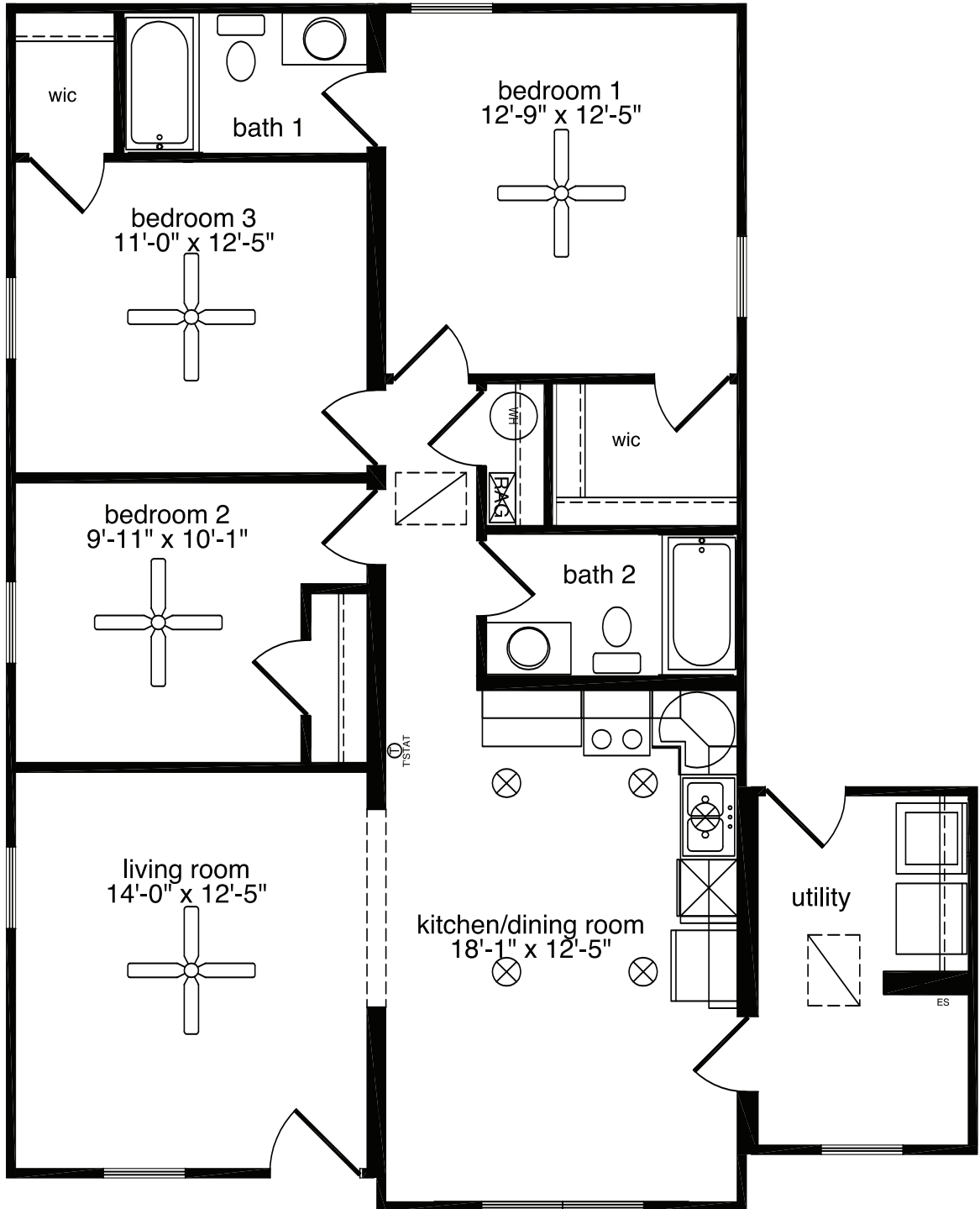


A magnificent kitchen/dining room combination highlights The Poplar. The optional bump-out window enhances the home's appeal. Three bedrooms and two full baths complete the design of this ranch home.

The Poplar

3 Bedrooms, 2 Baths
1,208 Living Area
34'4" x 42'8" Dimensions

The Poplar



All home elevations are artist renderings and may vary from actual construction. All floor plans and room sizes are approximate. All information contained is the sole property of HandCrafted Homes



HandCrafted Homes
A BETTER WAY TO BUILD

The Poplar
3 Bedrooms, 2 Baths
1,208 Living Area
34'4" x 42'8" Dimensions

877.424.4321



436.0001
430.6662 fax

101 Eastern Minerals Rd Henderson, NC 27537

www.HandCraftedHomes.com